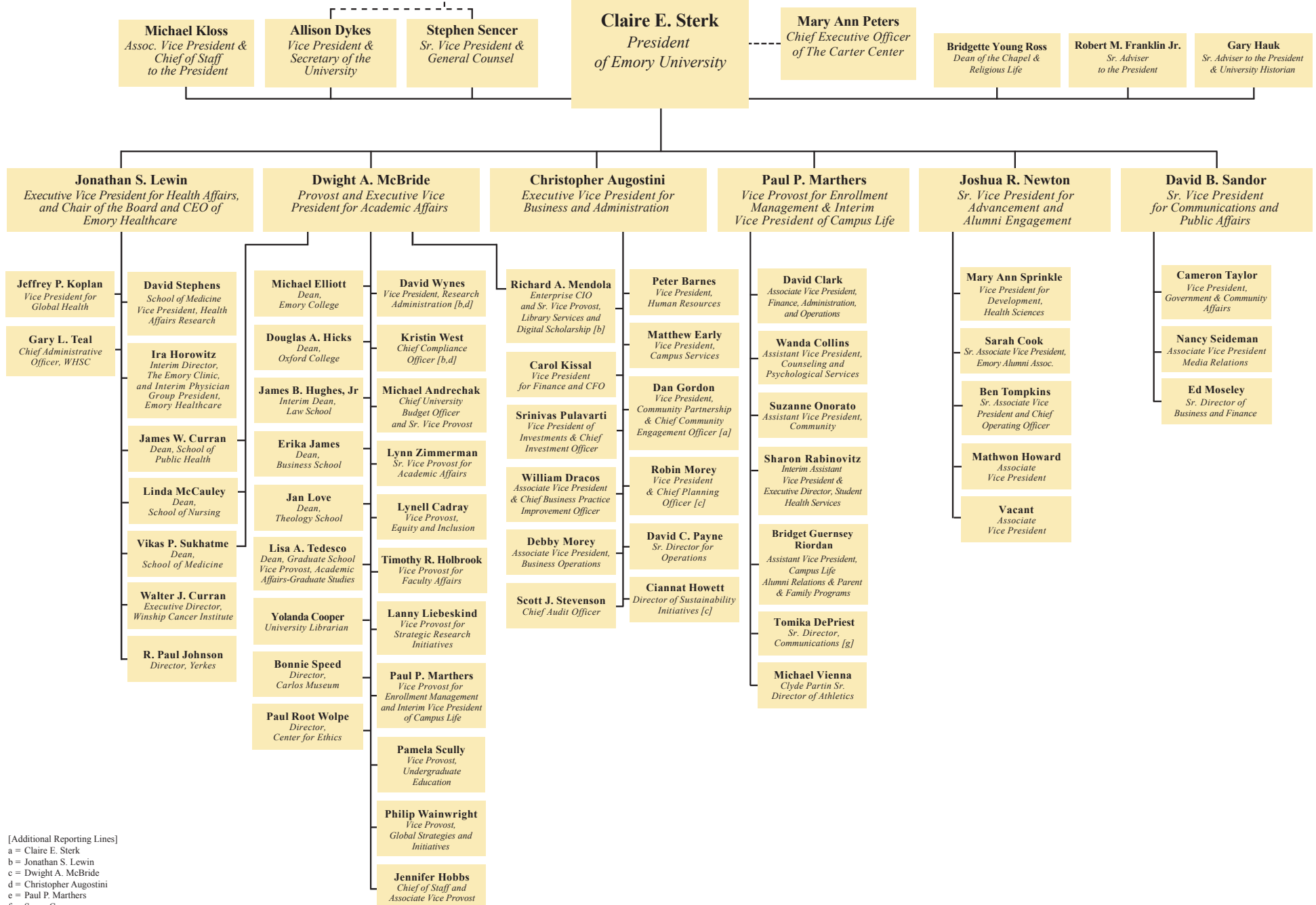


Emory University

ORGANIZATION CHART

27 August 2018

BOARD OF TRUSTEES



[Additional Reporting Lines]
 a = Claire E. Sterk
 b = Jonathan S. Lewin
 c = Dwight A. McBride
 d = Christopher Augostini
 e = Paul P. Marthers
 f = Susan Cruise
 g = David Sandor
 h = Carter Center Board of Trustees